

The Lover's Waltz

Molly Mason & Jay Ungar

Chords: G, C, G, C, Am, D7, Am, C, G, C, Am, D, B, G, Am7, G/B, C, G, Em, Am, D7, C, D, Em, C, D7, 1. G, 2. G, A7, D, G, D, D, A7, Em, G, D, G, Em, A7, D, Em7, D, G, D, Bm.

Key signature: G major (F#).

Time signature: 3/4.

Staff 1: G C G

Staff 2: C Am D7 Am C G

Staff 3: C Am D

Staff 4: B G Am7 G/B C G

Staff 5: Em Am D7 C D Em

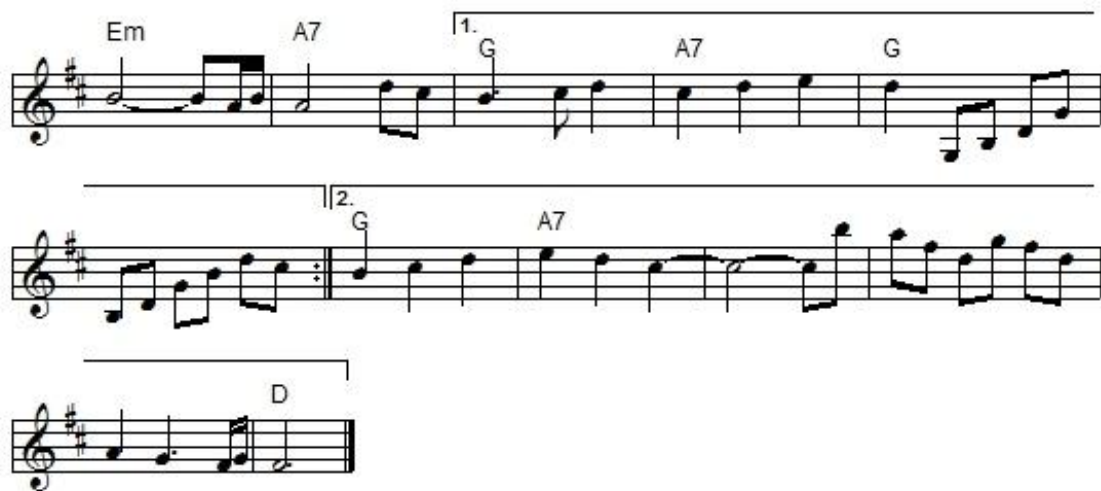
Staff 6: C D7 1. G 2. G

Staff 7: A7 D G D

Staff 8: D A7 Em G D

Staff 9: G Em A7 D

Staff 10: Em7 D G D Bm



"The Lover's Waltz" is an American waltz in D Major. It is sometimes played in G major with a modulation to D major. The parts are played AB or, with the modulation, ABABCDD.

It was composed in 1985 by Hudson Valley New York region musicians Molly Mason and Jay Ungar. The version given here is the G - D modulated version with some variations as played by our local jam group.

It was printed in Matthiesen's **The Waltz Book** (1992).

It was recorded by Jay Ungar and Molly Mason on **The Lover's Waltz** (1997).