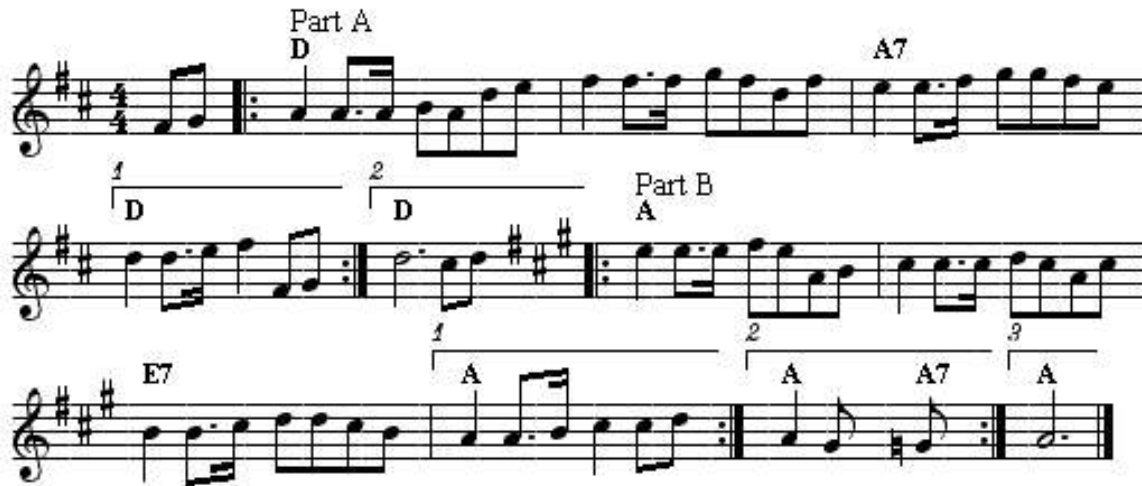


Maple Sugar

Ward Allen



"Maple Sugar" is a Canadian (originally) and American two-Step or reel in A Major ('A' part) and E Major ('B' {or 'C'} part) (Bain, Beisswenger & McCann, Bohrer, Phillips, Silberberg), G Major ('A' part) and D Major ('B' part) (Bayard) or D Major (Perlman). The parts are played AA'B (Perlman), ABB' (Bayard), AA'BB' (Bain, Beisswenger & McCann), ABAC (Bohrer/Kibler), AA'BB'CC'BB' (Phillips) or AA'BB'AA'CC' (Silberberg).

It was composed in 1956 by Ontario fiddler Ward Allen (1924-1965), a professional fiddler who won contest after contest in Canada the 1950's and had a successful career playing on the radio. Allen played with Montana Slim, Wilf Carter ("the father of Canadian country music"), appeared on the Grand Ole Opry and had a radio show on Frank Ryan's station CFRA in Ottawa, Canada. "Maple Sugar" was released by Sparton Records in 1956 as the 'B' side to the Canadian "Back Up and Push (1)", which was expected to be the stronger tune. However, "Maple Sugar" was to become a hit in Canada, and received some airplay in the United States as well.

It was printed in Bain's **50 Fiddle Solos** (1989), Bayard's **Dance to the Fiddle** (1981), Beisswenger & McCann's **Ozarks Fiddle Music** (2008), Bohrer's **Vic Kibler: Adirondack Fiddler** (1992), Perlman's **The Fiddle Music of Prince Edward Island** (1996), Phillips' **Traditional American Fiddle Tunes, vol. 2** (1995), Silberberg's **Tunes I Learned at Tractor Tavern** (2002).

It was recorded by Earl Mitton and the Valley Rhythm Boys on **Down East Fiddle Favourites** (1958), Lonnie Robertson on **Fiddle Tunes, Ozark Style, vol. 2** (c. 1978), Graham & Eleanor Townsend on **Graham & Eleanor Townsend Live at Barre, Vermont**, Fireside String Band on **Square Dance Tunes for a Yankee Caller**, Ward Allen on **Ward Allen Presents Maple Leaf Hoedown, vol. 1** (reissue), **Best of Ward Allen** (1973) and **It's a Saturday Night Barn Dance** (c. 1996, compilation) and Duane Perry on **New England Traditional Fiddling** (1978)